

Cable Trolleys

Program 0250 / 0255 / 0260

C-Rail and Cable Trolleys Program 0250

C-Rail and Cable Trolleys Program 0255

C-Rail and Cable Trolleys Program 0260

Cable Trolleys "Light Type"

Accessories

Helpful Hints

Spare Parts



Contents

C-Rail and Accessories Program 0250

C-Rail 50 x 50	2
Track Coupler	2
End Stop	2
Track Support Bracket	2
Support Arm and Girder Clip	3
Bracket	3

Cable Trolleys Program 0250

Cable Trolleys for Flat Cable	4
Cable Trolleys for Round Cable	5
Pairs of Rollers for Cable Trolleys	5

C-Rail and Accessories Program 0255

C-Rail 63 x 63	6
Track Coupler	6
End Stop	6
Track Support Bracket	6
Support Arm and Girder Clip	7
Bracket	7

Cable Trolleys Program 0255

Cable Trolleys for Flat Cable	8
Cable Trolleys for Round Cable	9
Pairs of Rollers for Cable Trolleys	9

C-Rail and Accessories Program 0260

C-Rail 80 x 80	10
Track Coupler	10
End Stop	10
Track Support Bracket	10
Bracket	11

Cable Trolleys Program 0260

Cable Trolleys for Flat Cable	12
Cable Trolleys for Round Cable	13
Pairs of Rollers for Cable Trolleys	13

Cable Trolleys “Light Type”

Cable Trolleys for Flat Cable	14
Cable Trolleys for Round Cable	14
Trolley with 4 Rollers	15
Spring Safety Hook	15
End Stop	15

Accessories for Program 0250, 0255 and 0260

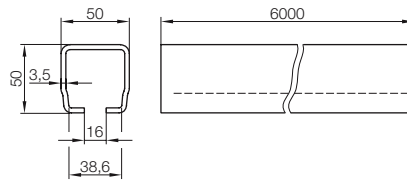
Tow Rope Assembly	16
Shock Cord Assembly	16
Round Cable Organizer	17
Cable Separator	17
Flat Cable Organizer	18

Helpful Hints / Spare Parts

Helpful Hints	19
Spare Parts	23

C-Rail and Accessories Program 0250

C-Rail 50 x 50



$$I_x = 17.8 \text{ cm}^4; W_x = 6.4 \text{ cm}^3$$

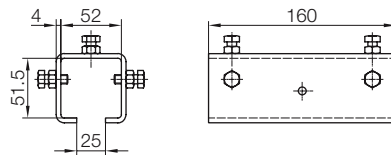
Catalogue-No.

025100

Technical details

- Material: sendzimir galvanized steel
- Weight: 4.36 kg/m
- Standard Length: 6 m
(Other lengths on request)

Track Coupler



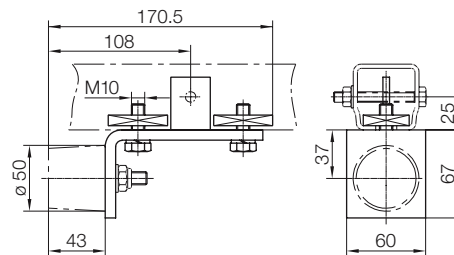
Catalogue-No.

025105

Technical details

- Material: hot dipped galvanized steel
- Hardware: galvanized steel
- Weight: 1.0 kg

End Stop



Catalogue-No.

025110

without Rubber Buffer

025111

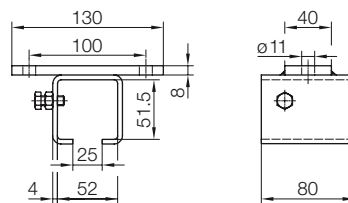
with Rubber Buffer

Technical details

- Material: hot dipped galvanized steel
- Hardware: galvanized steel
- Weight: 1.0 kg

To avoid system damage we recommend the fitting of a securing bolt as illustrated.

Track Support Bracket

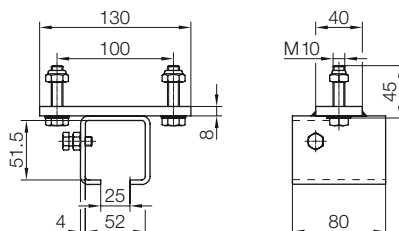


Catalogue-No.

025121

Technical details

- Material: hot dipped galvanized steel
- Hardware: galvanized steel
- Perm. Load: 320 kg
- Weight: 0.8 kg



Catalogue-No.

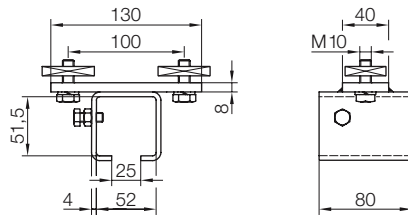
025123

Technical details

- Material: hot dipped galvanized steel
- Hardware: galvanized steel
- Perm. Load: 320 kg
- Weight: 0.9 kg

C-Rail and Accessories Program 0250

Track Support Bracket

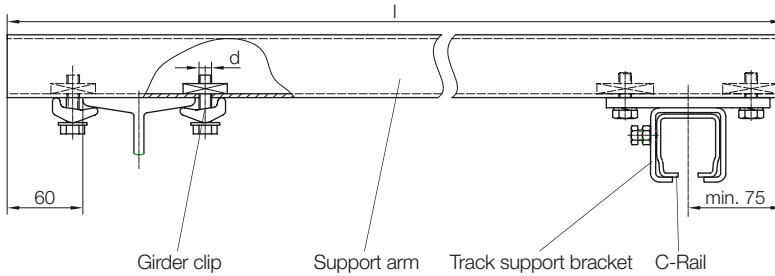


Catalogue-No.
025122

Technical details

- Material: hot dipped galvanized steel
- Hardware: galvanized steel
- Perm. Load: 320 kg
- Weight: 0.9 kg

Support Arm and Girder Clip



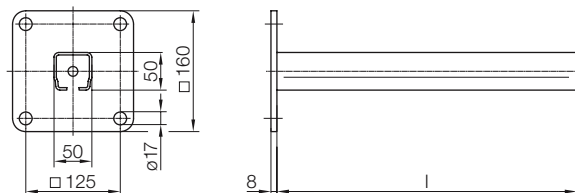
Description	Catalogue-No.	l [mm]	Weight [kg]
Support arm	020277-1000	1000	4.4

Material: sendzimir galvanized steel

Description	Catalogue-No.	d [mm]	Weight [kg]
Girder clip	020180-12/550	M12	0.3

Material: galvanized steel

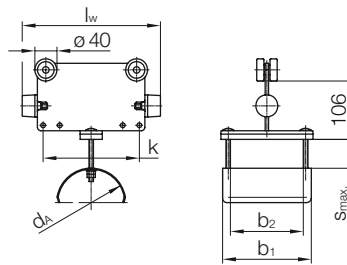
Bracket



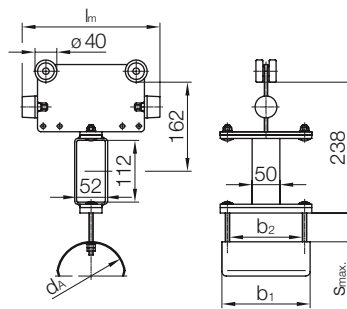
Catalogue-No.	l [mm]	Material	Weight [kg]
020191-0500	500	Hot dipped galvanized steel	3.8
020191-0800	800		5.1

Cable Trolleys Program 0250

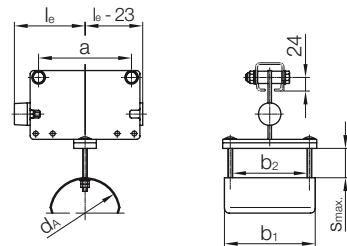
Cable Trolleys for Flat Cable



Cable Trolley



Towing Trolley



End Clamp¹⁾

Technical details

- Nominal Load Capacity: 50 kg
- Travel Speed: max. 100 m/min (See page „Helpful Hints“)
- Basic trolley and cable support: Steel, hot-dipped galvanized
- Hardware: Galvanized steel
- Standard roller: Ball bearing, galvanized steel

Ordering Example:

Cable Trolley for Flat Cable

Example:

To order a cable trolley with standard-rollers for a flat cable package with a size of 110 x 45 mm (width x thickness).

Selected:

Cable Trolley with
 $d_A = 125$ mm (According to minimum bend diameter of cable)
 $b_2 = 130$ mm
 $s = 55$ mm

Catalogue-No.:

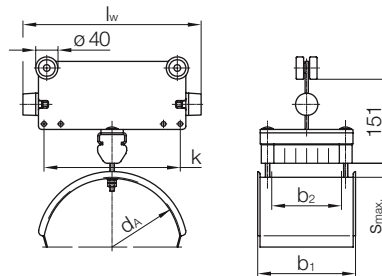
Cable Trolley
 Catalogue-No.: 025252-250x160

1) End clamp - 2 holes $\varnothing 12.5$ mm to be drilled into the C-Rail at distance a.

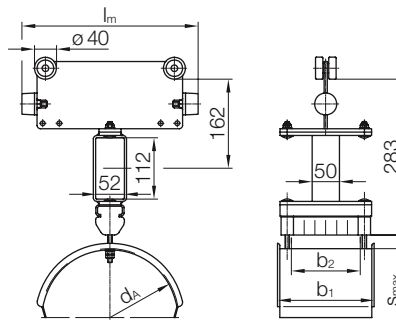
Cable Trolley Catalogue-No.	[kg]	Towing Trolley Catalogue-No.	[kg]	End Clamp Catalogue-No.	[kg]	d_A [mm]	l_w [mm]	k [mm]	b_1 [mm]	b_2 [mm]	s [mm]	l_m [mm]	l_e [mm]	a [mm]
025250-160x100	1.7	025260-200x100	2.7	025240-160x100	1.5	80	160	84	100	70	35	200	80	74
025250-160x160	1.9	025260-200x160	3.1	025240-160x160	1.8				160	130				
025250-200x100	1.9	025260-200x100	2.7	025240-200x100	1.8		200	124	100	70	55	200	100	114
025250-200x160	2.2	025260-200x160	3.1	025240-200x160	2.0				160	130				
025252-200x160	2.3	025262-200x160	3.2	025242-200x160	2.2	125	200	124	160	130	30	200	100	114
025252-250x100	2.3	025262-250x100	3.1	025242-250x100	2.2				250	174				
025252-250x160	2.6	025262-250x160	3.5	025242-250x160	2.5		160	130						
025252-250x200	3.0	025262-250x200	3.8	025242-250x200	2.9		200	170						
025253-250x160	2.9	025263-250x160	3.8	025243-250x160	2.8	160	250	174	175	130	40	250	125	164
025253-250x200	3.2	025263-250x200	4.0	025243-250x200	3.1				215	170				

Cable Trolleys Program 0250

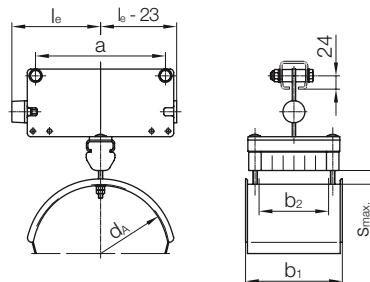
Cable Trolleys for Round Cable



Cable Trolley



Towing Trolley



End Clamp¹⁾

Technical details

- Nominal Load Capacity: 50 kg
- Travel Speed: max. 100 m/min (See page „Helpful Hints“)
- Basic trolley and cable support: Steel, hot-dipped galvanized
- Hardware: Galvanized steel
- Standard roller: Ball bearing, galvanized steel

Ordering Example:

Cable Trolley for Round Cable

Example:

To order a cable trolley with special-rollers for (PUR roller). Cable trolley selection for max. 25 mm ϕ round cable. This requires a support width of 200 mm.

Selected:

Cable Trolley with $d_A = 250$ mm (According to minimum bend diameter of cable)
 $b_2 = 215$ mm
 PUR-Roller .../017

Catalogue-No.:

Cable Trolley
 Catalogue-No.: 025355-320x250/017

1) End clamp - 2 holes ϕ 12.5 mm to be drilled into the C-Rail at distance a.

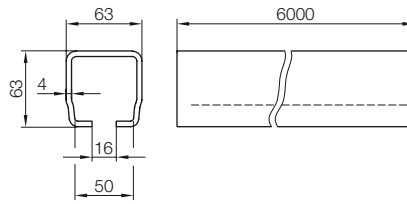
Cable Trolley Catalogue-No.	[kg]	Towing Trolley Catalogue-No.	[kg]	End Clamp Catalogue-No.	[kg]	d_A [mm]	l_w [mm]	k [mm]	b_1 [mm]	b_2 [mm]	s [mm]	l_m [mm]	l_e [mm]	a [mm]
025354-250x160	3.7	025364-250x160	4.5	025344-250x160	3.6	200	250	174	175	125	20	250	125	164
025354-250x200	4.0	025364-250x200	4.8	025344-250x200	3.9				215	165				
025355-320x160	4.3	025365-320x160	5.1	025345-320x160	4.2	250	320	244	175	125	25	320	160	234
025355-320x250	5.3	025365-320x250	6.1	025345-320x250	5.2				265	215				
025357-400x160	5.1	025367-400x160	5.9	025347-400x160	5.0	320	400	324	175	125	32	400	200	314
025357-400x250	6.2	025367-400x250	7.0	025347-400x250	6.0				265	215				

Pairs of Rollers for Cable Trolleys Program 0250

Description	Roller Type	Sealing Type	Load Capacity [kg]	Special Roller Additional-Catalogue-No.	Spare Part Pair of Roller Catalogue-No.
Standard Roller	Ball Bearing, galvanized steel	2 Z	50	-	025460-21
Roller with Seal Disk		2 RS		.../010	025462-21
PUR-Roller	Ball Bearing with PUR-bandage	2 RS	40	.../017	025468-21

C-Rail and Accessories Program 0255

C-Rail 63 x 63



$$I_x = 44.4 \text{ cm}^4; W_x = 13.0 \text{ cm}^3$$

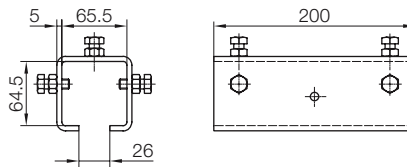
Catalogue-No.

025600

Technical details

- Material: sendzimir galvanized steel
- Weight: 6.55 kg/m
- Standard Length: 6 m
(Other lengths on request)

Track Coupler



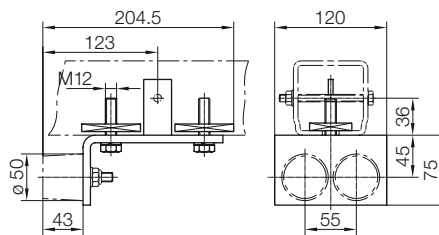
Catalogue-No.

025605

Technical details

- Material: hot dipped galvanized steel
- Hardware: galvanized steel
- Weight: 1.9 kg

End Stop



Catalogue-No.

025610

without Rubber Buffer

025611

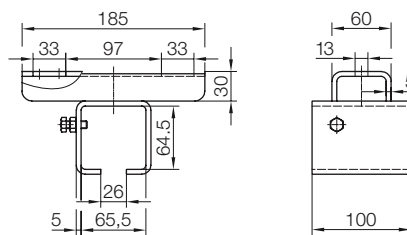
with Rubber Buffer

Technische Merkmale

- Material: hot dipped galvanized steel
- Hardware: galvanized steel
- Weight: 2.5 kg

To avoid system damage we recommend the fitting of a securing bolt as illustrated.

Track Support Bracket

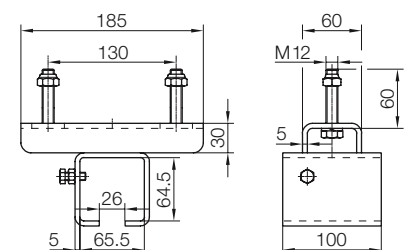


Catalogue-No.

025621

Technical details

- Material: hot dipped galvanized steel
- Hardware: galvanized steel
- Perm. Load: 500 kg
- Weight: 1.65 kg



Catalogue-No.

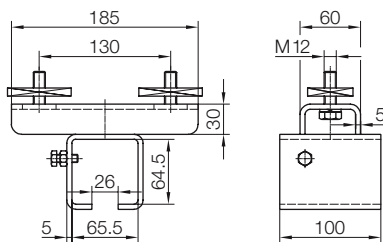
025623

Technical details

- Material: hot dipped galvanized steel
- Hardware: galvanized steel
- Perm. Load: 500 kg
- Weight: 1.8 kg

C-Rail and Accessories Program 0255

Track Support Bracket

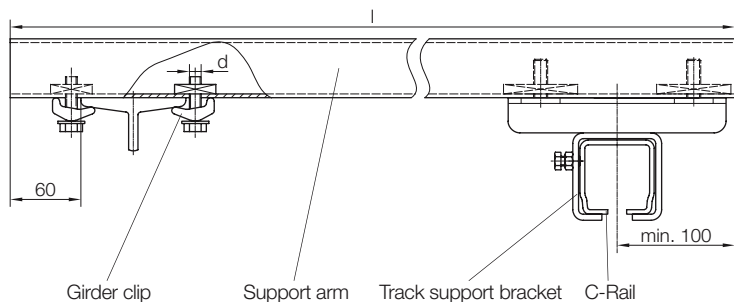


Catalogue-No.
025622

Technical details

- Material: hot dipped galvanized steel
- Hardware: galvanized steel
- Perm. Load: 500 kg
- Weight: 1.8 kg

Support Arm and Girder Clip



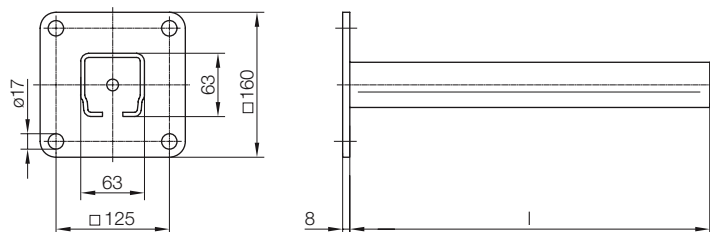
Description	Catalogue-No.	l [mm]	Weight [kg]
Support arm	020273-1000	1000	6.6

Material: sendzimir galvanized steel

Description	Catalogue-No.	d [mm]	Weight [kg]
Girder clip	020180-12/550	M12	0.3

Material: galvanized steel

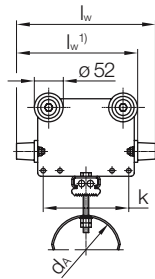
Bracket



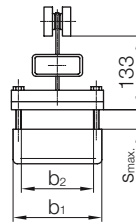
Catalogue-No.	l [mm]	Material	Weight [kg]
020192-0500	500	Hot dipped galvanized steel	4.8
020192-0800	800		6.8

Cable Trolleys Program 0255

Cable Trolleys for Flat Cable

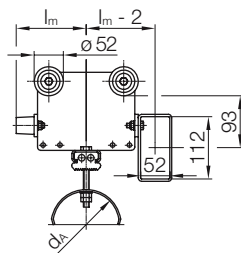


Cable Trolley

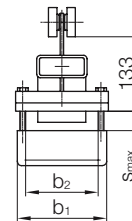


Technical details

- Nominal Load Capacity: 80 kg
- Travel Speed: max. 120 m/min (See page „Helpful Hints“)
- Basic trolley and cable support: Steel, hot-dipped galvanized
- Hardware: Galvanized steel
- Standard roller: Ball bearing, galvanized steel



Towing Trolley



Ordering Example:

Cable Trolley for Flat Cable

Example:

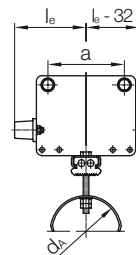
To order a cable trolley with standard-rollers for a flat cable package with a size of 140 x 50 mm (width x thickness).

Selected:

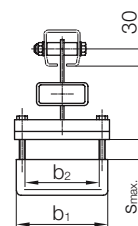
Cable Trolley with
 $d_A = 125$ mm (According to minimum bend diameter of cable)
 $b_2 = 168$ mm
 $s = 55$ mm

Catalogue-No.:

Cable Trolley
 Catalogue-No.: 025772-250x200



End Clamp¹⁾



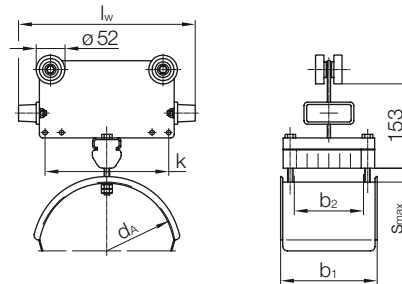
¹⁾ End clamp - 2 holes ø 12.5 mm to be drilled into the C-Rail at distance a.

Cable Trolley Catalogue-No.	[kg]	Towing Trolley Catalogue-No.	[kg]	End Clamp Catalogue-No.	[kg]	d_A [mm]	l_w [mm]	k [mm]	b_1 [mm]	b_2 [mm]	s [mm]	l_m [mm]	l_e [mm]	a [mm]			
025772-220x160	3.4	025782-320x160	4.9	025792-320x160	3.5	125	220 ¹⁾	154	160	128	40	160	160	204			
025772-220x200	3.6	025782-320x200	5.1	025792-320x200	3.8				200	168							
025772-250x160	3.6	025782-320x160	4.9	025792-320x160	3.5		250	154	160	128	55				160	160	204
025772-250x200	3.8	025782-320x200	5.1	025792-320x200	3.8				200	168							
025773-290x160	4.2	025783-320x160	5.2	025793-320x160	3.8	160	290 ¹⁾	244	175	128	55	160	160	204			
025773-290x200	4.3	025783-320x200	5.3	025793-320x200	4.0				215	168							
025773-320x160	4.3	025783-320x160	5.2	025793-320x160	3.8	320	244	244	175	128	70				160	160	204
025773-320x200	4.5	025783-320x200	5.3	025793-320x200	4.0				215	168							
025774-320x160	4.5	025784-320x160	5.3	025794-320x160	4.0	200	320	244	175	128	50	160	160	204			
025774-320x200	4.8	025784-320x200	5.6	025794-320x200	4.3				215	168							

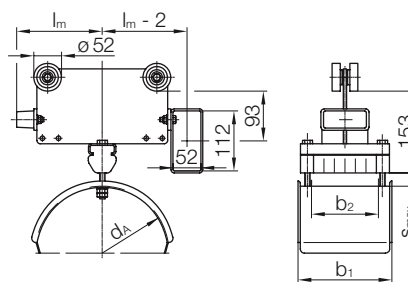
¹⁾ Cable trolley only with one buffer

Cable Trolleys Program 0255

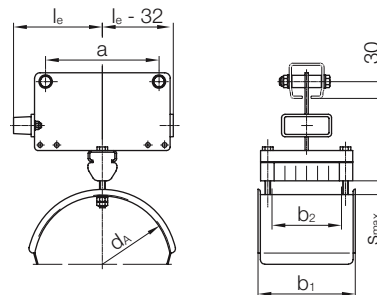
Cable Trolleys for Round Cable



Cable Trolley



Towing Trolley



End Clamp¹⁾

Technical details

- Nominal Load Capacity: 80 kg
- Travel Speed: max. 120 m/min (See page „Helpful Hints“)
- Basic trolley and cable support: Steel, hot-dipped galvanized
- Hardware: Galvanized steel
- Standard roller: Ball bearing, galvanized steel

Ordering Example:

Cable Trolley for Round Cable

Example:

To order a cable trolley with special-rollers for (PUR roller). Cable trolley selection for max. 25 mm \varnothing round cable. This requires a support width of 200 mm.

Selected:

Cable Trolley with $d_A = 250$ mm (According to minimum bend diameter of cable)
 $b_2 = 211$ mm
 Roller with Seal Disk 2 RS .../015

Catalogue-No.:

Cable Trolley
 Catalogue-No.: 025875-320x250/015

¹⁾ End clamp - 2 holes $\varnothing 12.5$ mm to be drilled into the C-Rail at distance a.

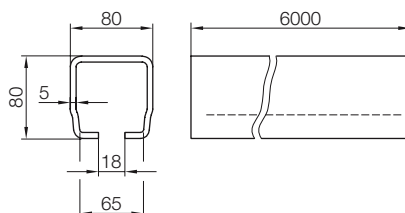
Cable Trolley Catalogue-No.	[kg]	Towing Trolley Catalogue-No.	[kg]	End Clamp Catalogue-No.	[kg]	d_A [mm]	l_w [mm]	k [mm]	b_1 [mm]	b_2 [mm]	s [mm]	l_m [mm]	l_e [mm]	a [mm]
025875-320x200	5.3	025885-320x200	6.1	025895-320x200	4.7	250	320	224	215	161	25	160	160	204
025875-320x250	5.8	025885-320x250	6.6	025895-320x250	5.3				265	211				
025877-400x200	6.2	025887-400x200	7.0	025897-400x200	5.7	320	400	304	215	161	32	200	200	284
025877-400x250	6.7	025887-400x250	7.5	025897-400x250	6.2				265	211				

Pairs of Rollers for Cable Trolleys Program 0255

Description	Roller Type	Sealing Type	Load Capacity [kg]	Special Roller Additional Catalogue-No.	Spare Part Pair of Roller Catalogue-No.
Standard Roller	Ball Bearing, galvanized steel	2 Z	80	-	025980-21
Roller with Seal Disk		2 RS		.../015	025985-21
PUR-Roller	Ball Bearing with PUR-bandage	2 RS	63	.../017	025988-21

C-Rail and Accessories Program 0260

C-Rail 80 x 80



$$I_x = 117.8 \text{ cm}^4; W_x = 27.4 \text{ cm}^3$$

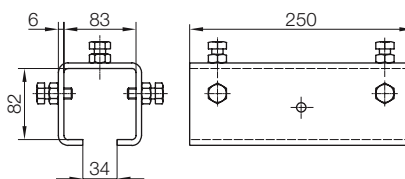
Catalogue-No.

148005

Technical details

- Material: galvanized steel
- Weight: 10.6 kg/m
- Standard Length: 6 m
(Other lengths on request)

Track Coupler



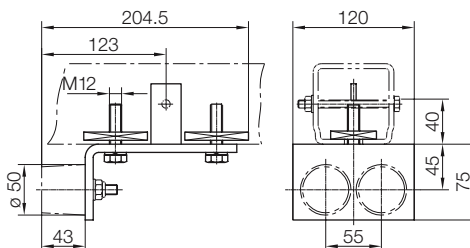
Catalogue-No.

026105

Technical details

- Material: hot dipped galvanized steel
- Hardware: galvanized steel
- Weight: 3.6 kg

End Stop



Catalogue-No.

026111

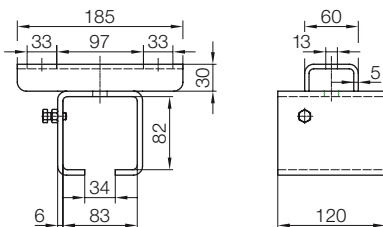
with Rubber Buffer

Technical details

- Material: hot dipped galvanized steel
- Hardware: galvanized steel
- Weight: 2.4 kg

To avoid system damage we recommend the fitting of a securing bolt as illustrated.

Track Support Bracket



Catalogue-No.

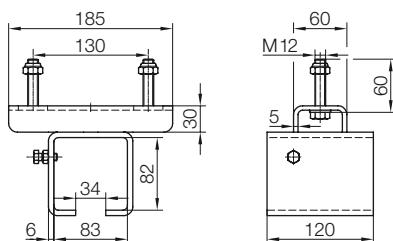
026121

Technical details

- Material: hot dipped galvanized steel
- Hardware: galvanized steel
- Perm. Load: 630 kg
- Weight: 4.3 kg

C-Rail and Accessories Program 0260

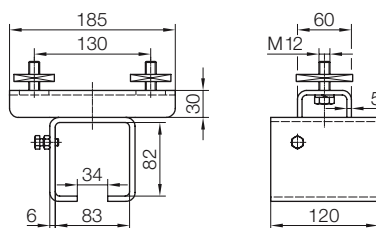
Track Support Bracket



Catalogue-No.
026123

Technical details

- Material: hot dipped galvanized steel
- Hardware: galvanized steel
- Perm. Load: 630 kg
- Weight: 2.5 kg

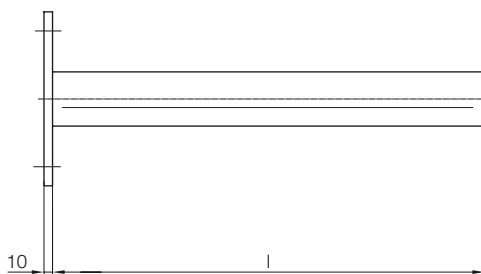
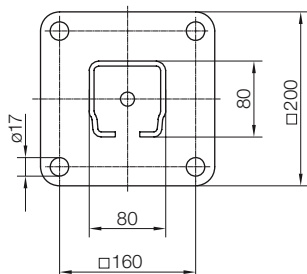


Catalogue-No.
026122

Technical details

- Material: hot dipped galvanized steel
- Hardware: galvanized steel
- Perm. Load: 630 kg
- Weight: 2.5 kg

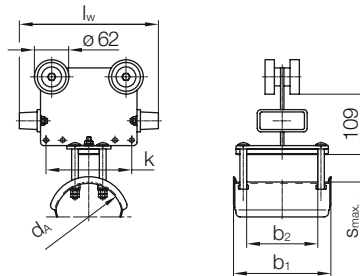
Bracket



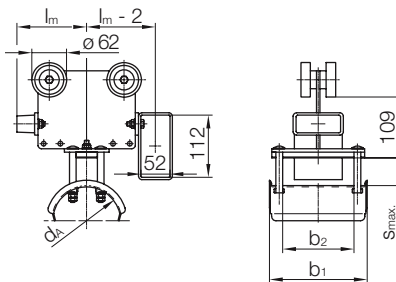
Catalogue-No.	l [mm]	Material	Weight [kg]
020193-0500	500	Hot dipped galvanized steel	8.4
020193-0800	800		11.6

Cable Trolleys Program 0260

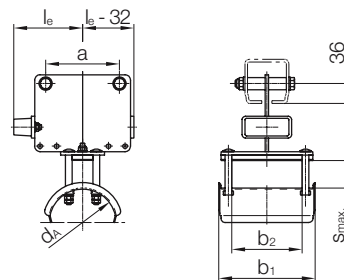
Cable Trolleys for Flat Cable



Cable Trolley



Towing Trolley



End Clamp¹⁾

Technical details

- Nominal Load Capacity: 125 kg
- Travel Speed: max. 120 m/min (See page „Helpful Hints“)
- Basic trolley and cable support: Steel, hot-dipped galvanized
- Hardware: Galvanized steel
- Standard roller: Ball bearing, galvanized steel

Ordering Example:

Cable Trolley for Flat Cable

Example:

To order a cable trolley with standard-rollers for a flat cable package with a size of 160 x 60 mm (width x thickness).

Selected:

Cable Trolley with
 $d_A = 160$ mm (According to minimum bend diameter of cable)
 $b_2 = 168$ mm
 $s = 70$ mm

Catalogue-No.:

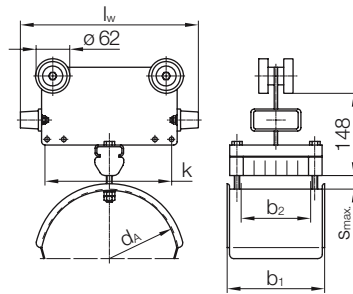
Cable Trolley
 Catalogue-No.: 026273-320x200

¹⁾ End clamp - 2 holes $\varnothing 12.5$ mm to be drilled into the C-Rail at distance a.

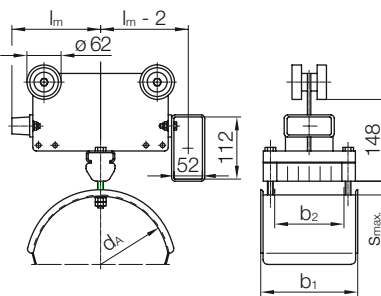
Cable Trolley Catalogue-No.	[kg]	Towing Trolley Catalogue-No.	[kg]	End Clamp Catalogue-No.	[kg]	d_A [mm]	l_w [mm]	k [mm]	b_1 [mm]	b_2 [mm]	s [mm]	l_m [mm]	l_e [mm]	a [mm]
026272-250x160	4.6	026282-320x160	5.9	026292-320x160	3.6	125	250	154	175	128	55	160	160	204
026272-250x200	4.9	026282-320x200	6.2	026292-320x200	3.9				215	168				
026272-250x250	5.2	026282-320x250	6.6	026292-320x250	4.3				265	218				
026273-320x160	5.2	026283-320x160	6.1	026293-320x160	3.7	160	320	224	175	128	70	160	160	204
026273-320x200	5.6	026283-320x200	6.4	026293-320x200	4.1				215	170				
026273-320x250	6.0	026283-320x250	6.8	026293-320x250	4.5				265	218				

Cable Trolleys Program 0260

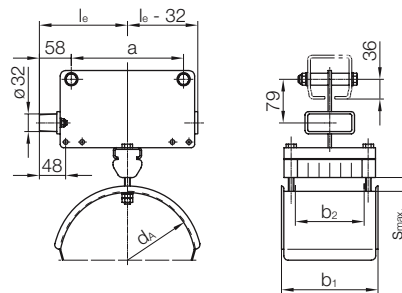
Cable Trolleys for Round Cable



Cable Trolley



Towing Trolley



End Clamp¹⁾

Technical details

- Nominal Load Capacity: 125 kg
- Travel Speed: max. 120 m/min (See page „Helpful Hints“)
- Basic trolley and cable support: Steel, hot-dipped galvanized
- Hardware: Galvanized steel
- Standard roller: Ball bearing, galvanized steel

Ordering Example:

Cable Trolley for Round Cable

Example:

To order a cable trolley with special-rollers (Roller with seal rings). Cable trolley selection for max. 32 mm ϕ round cable. This requires a support width of 180 mm.

Selected:

Cable Trolley with
 $d_A = 320$ mm (According to minimum bend diameter of cable)
 $b_2 = 211$ mm
 Roller with Seal Disk 2 RS .../015

Catalogue-No.:

Cable Trolley
 Catalogue-No.: 026377-400x250/015

1) End clamp - 2 holes ϕ 12.5 mm to be drilled into the C-Rail at distance a.

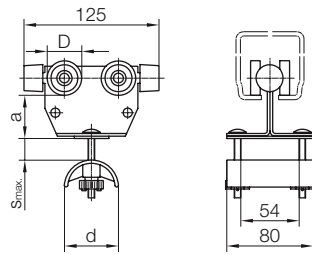
Cable Trolley Catalogue-No.	[kg]	Towing Trolley Catalogue-No.	[kg]	End Clamp Catalogue-No.	[kg]	d_A [mm]	l_w [mm]	k [mm]	b_1 [mm]	b_2 [mm]	s [mm]	l_m [mm]	l_e [mm]	a [mm]
026375-320x200	5.9	026385-320x200	6.7	026395-320x200	4.8	250	320	224	215	161	25	160	160	204
026375-320x250	6.4	026385-320x250	7.3	026395-320x250	5.4				265	211				
026377-400x200	6.8	026387-400x200	7.7	026397-400x200	5.8	320	400	304	215	161	32	200	200	284
026377-400x250	7.3	026387-400x250	8.2	026397-400x250	6.3				265	211				

Pairs of Rollers for Cable Trolleys Program 0260

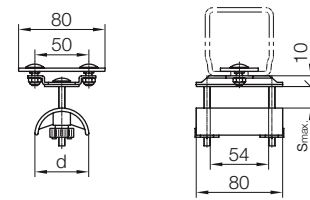
Description	Roller Type	Sealing Type	Load Capacity [kg]	Special Roller Additional-Catalogue-No.	Spare Part Pair of Roller Catalogue-No.
Standard Roller	Ball Bearing, galvanized steel	2 Z	125	-	026480-21
Roller with Seal Disk		2 RS		.../015	026485-21
PUR-Roller	Ball Bearing with PUR-bandage	2 RS	100	.../017	026488-21

Cable Trolleys “Light Type“

Cable Trolleys for Flat Cable



Cable Trolley



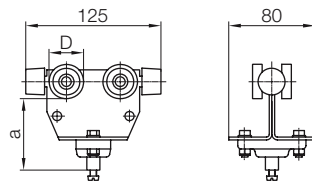
End Clamp

Technical details

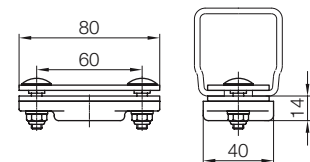
- Main Body: sendzimir galvanized steel
- Buffer: rubber
- Support: plastic
- Insulating Plate: plastic
- Split Nut: plastic
- Hardware: galvanized steel

for C-Rail	Program	Cable Trolley Catalogue-No.	[kg]	End Clamp Catalogue-No.	[kg]	D [mm]	d [mm]	a [mm]	s [mm]	Load Capacity [kg]
50x50	250	025270-125x080	0.45	025290	0.20	25	50	42	35	20
		025271-125x080	0.47	025291	0.23		80	42	20	
63x63	255	025770-125x080	0.56	025790	0.20	32	50	38	35	32
		025771-125x080	0.58	025791	0.23		80	38	20	
80x80	260	026270-125x080	0.58	026290	0.22	32	50	38	35	32
		026271-125x080	0.60	026291	0.25		80	38	20	

Cable Trolleys for Round Cable



Cable Trolley

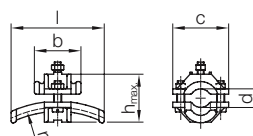


End Clamp

Technical details

- Main Body: sendzimir galvanized steel
- Buffer: rubber
- Ball Joint: plastic
- Connecting Plate: plastic
- Hardware: galvanized steel

for C-Rail	Program	Cable Trolley Catalogue-No.	[kg]	End Clamp Catalogue-No.	[kg]	D [mm]	d [mm]	Load Capacity [kg]
50x50	250	025306	0.35	025308	0.25	25	70	20
63x63	255	025806	0.45	025808	0.25	32	66	32
80x80	260	026306	0.48	026308	0.27			



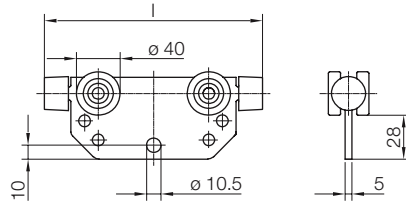
End Clamp

If required, it is possible to fit one or more similar or different sized cable clips to a trolley. When fitting different sized cable clips, the largest cable clip must be fitted on top.

Catalogue-No.	d [mm]	r [mm]	l [mm]	h [mm]	b [mm]	c [mm]	Material		Weight [kg]
							Cable clip	Fasteners	
020131-16	10-16	80	70	38	35	42	Plastic	Galvanized Steel	0.04
020131-25	17-25	125	100	47	50	50			0.06
020131-36	26-36	180	140	58	70	64			0.12

Cable Trolleys “Light Type“

Trolley with 4 Rollers

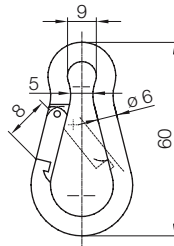


Technical details

- Main body: hot dipped galvanized steel
- Roller (ball bearing): galvanized steel
- Buffer: rubber

for C-Rail	Program	Catalogue-No.	Weight [kg]	l [mm]	Load Capacity [kg]
50x50	250	025440-125	0.42	125	50
		025440-160	0.50	160	

Spring Safety Hook



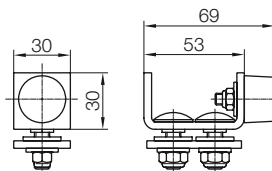
Catalogue-No.

020215-60x6

Technical details

- Material galvanized steel

End Stop



Technical details

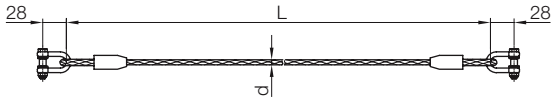
- Material: hot dipped galvanized steel
- Hardware: galvanized steel
- Buffer: rubber

for C-Rail	Program	Catalogue-No.	Type	Weight [kg]
50x50	250	025115	with Buffer	0.20
63x63	255	025115		0.20
80x80	260	026115		0.22

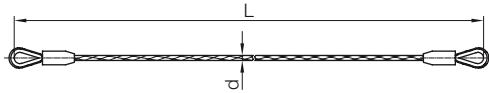
Accessories for Program 0250, 0255 and 0260

Tow Rope Assembly

Type B



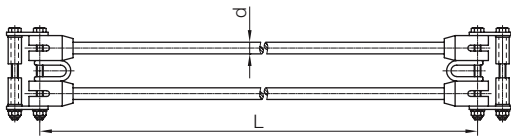
Type C



Type C suggested for use with shock cord assembly.
Different types and lengths available upon request.

Catalogue-No.	d [mm]	Material Rope	Type	for Program
020328-06	6	Galvanized Steel	B	0250, 0255, 0260
020329-08	8	Galvanized Steel with PVC Jacket		
020325-08	8	Galvanized Steel with PVC Jacket	C	

Shock Cord Assembly

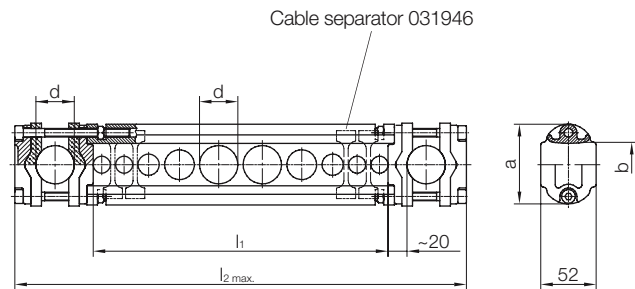


Different types and lengths available upon request.

Catalogue-No.	d [mm]	Material Rope	for Program
020337-10	10	Rubber core with Nylon jacket	0250, 0255, 0260
020337-14	14		

Accessories for Program 0250, 0255 and 0260

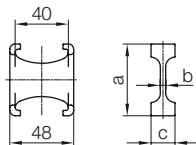
Round Cable Organizer



Catalogue-No.	d_{max} [mm]	l_1 [mm]	l_2 [mm]	a [mm]	b [mm]	$\Sigma d^{1)}$ [mm]	Support Rail	Material Cable Clip	Fasteners
031941-026x100	26	100	236	64	30	34	Rubber	Rubber	Galvanized Steel/ Stainless Steel
031941-026x150		150	286						
031941-026x200		200	336						
031941-026x250		250	386						
031941-036x100	36	100	256	74	40	46			
031941-036x150		150	306						
031941-036x200		200	356						
031941-036x250		250	406						

1) A cable separator is required between cables if the sum of the diameters of two adjacent cables is smaller than the value Σd .

Cable Separator



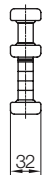
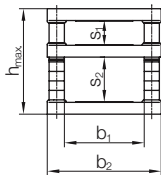
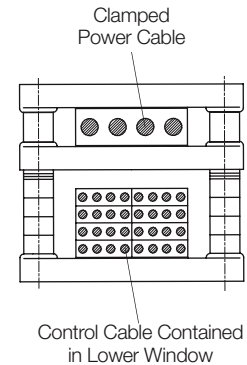
Catalogue-No.	a [mm]	b [mm]	c [mm]	Material	Used with Round Cable Clamp
031946-26	54	4	18	Plastic	031941-026x...
031946-36	64	5	19		031941-036x...

Accessories for Program 0250, 0255 and 0260

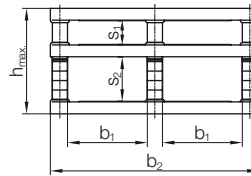
Flat Cable Organizer



Power cable(s) are clamped in upper window (s_1), control cable(s) are contained in lower window (s_2) with sufficient space (> 2 mm) to allow the cables to move freely. Flat cable clamps are supplied preassembled with upper window (s_1) of minimum size and lower window (s_2) of maximum size. The clamps can be adjusted to fit individual cables and/or cable packages by transferring spacers from window (s_2) to window (s_1), or visa versa.



Catalogue-No. 020126... and 031953...



Catalogue-No. 031955...

Catalogue-No.	b_1 [mm]	b_2 [mm]	$s_1 + s_2$ [mm]		s_{1min} [mm]	h_{max} [mm]	Clamp	Material Fastener
020126-054x018	54	90	18	+2.5	3	50	Plastic	Galvanized Steel/ Stainless Steel
020126-054x028			28			60		
020126-054x038			38			70		
031953-084x025	84	120	25	+2.5	5	60		
031953-084x035			35			70		
031953-084x045			45			80		
031953-084x055			55			90		
031953-084x065	136	172	65	+2.5	5	100		
031953-136x025			25			60		
031953-136x035			35			70		
031953-136x045			45			80		
031953-136x055			55			90		
031953-136x065			65			100		
031953-136x075	84	220	75	+2.5	5	110		
031953-136x085			85			120		
031955-084x035			35			70		
031955-084x045	84	220	45	+2.5	5	80		
031955-084x055			55			90		
031955-084x065			65			100		
031955-084x075			75			110		
031955-103x025	103	258	25	+2.5	5	60		
031955-103x035			35			70		
031955-103x045			45			80		
031955-103x055			55			90		
031955-103x065			65			100		
031955-103x075	75	110						

Helpful Hints

Calculation of the load capacities of C-Rails

Given

F_{LW} Load / trolley [kg]
 l_w Length of cable trolley [mm]
 Z Number of cable trolleys
 l_b Block Length
 (m) = $Z \times l_w / 1000$

From diagram

l_A Required distance between track support brackets [m]

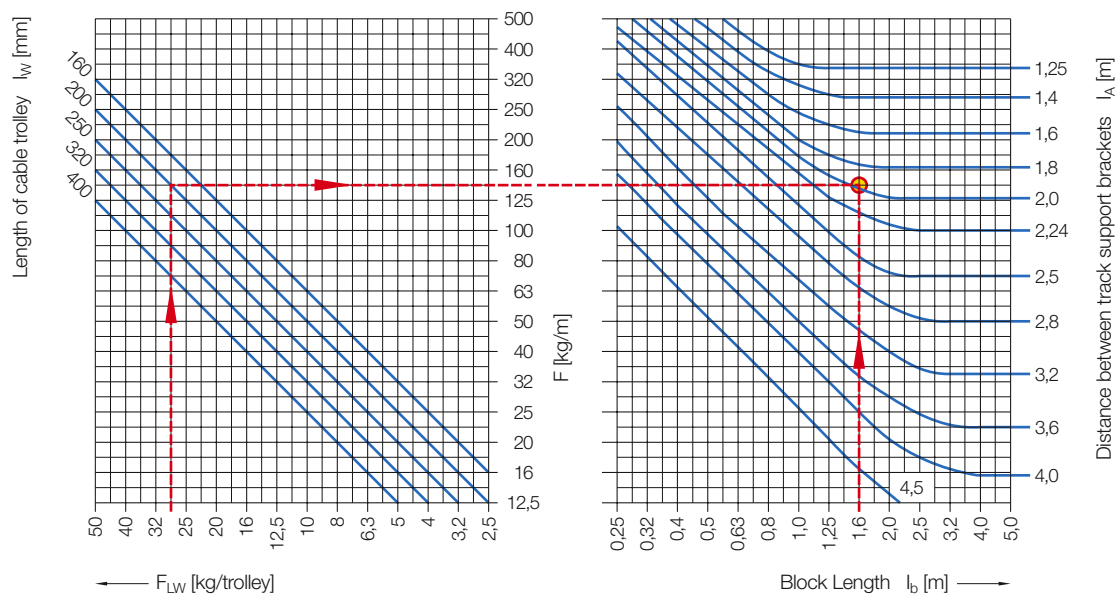
Bases of calculation

$\sigma_{b_{zul}}$ = 100 N/mm²
 without consideration of the flange tension
 f = $l_A / 250$
 (allowed deflection from load and self-weight of the c-rail)

Input for example

F_{LW} = 28 kg
 Z = 8
 l_w = 200 mm
 l_b = 1,6 m

Load diagram for C-Rail 025100

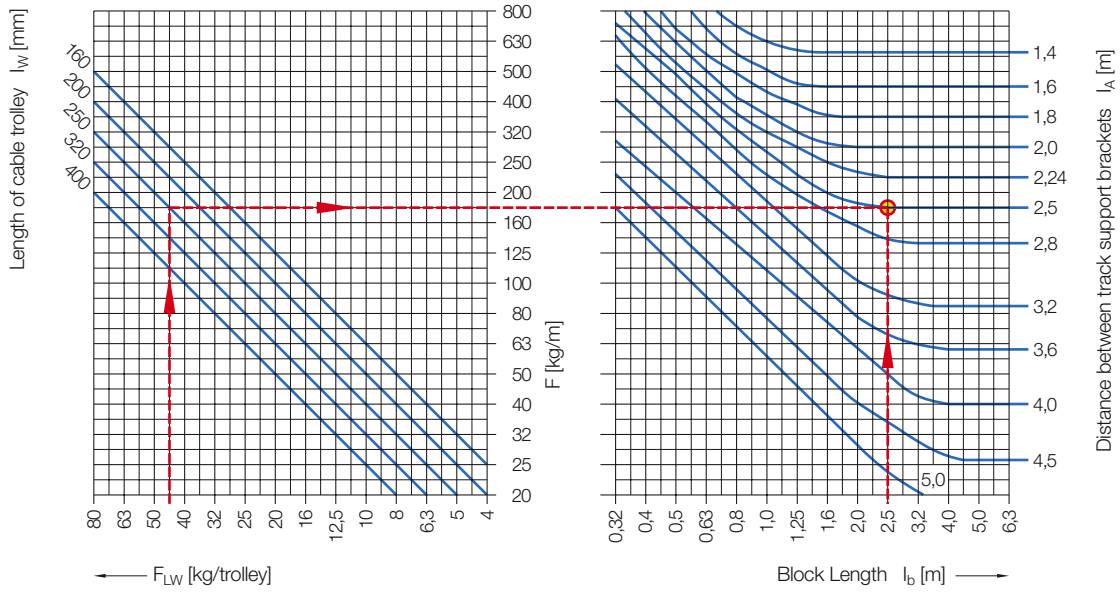


Result for C-Rail 025100 from diagram:

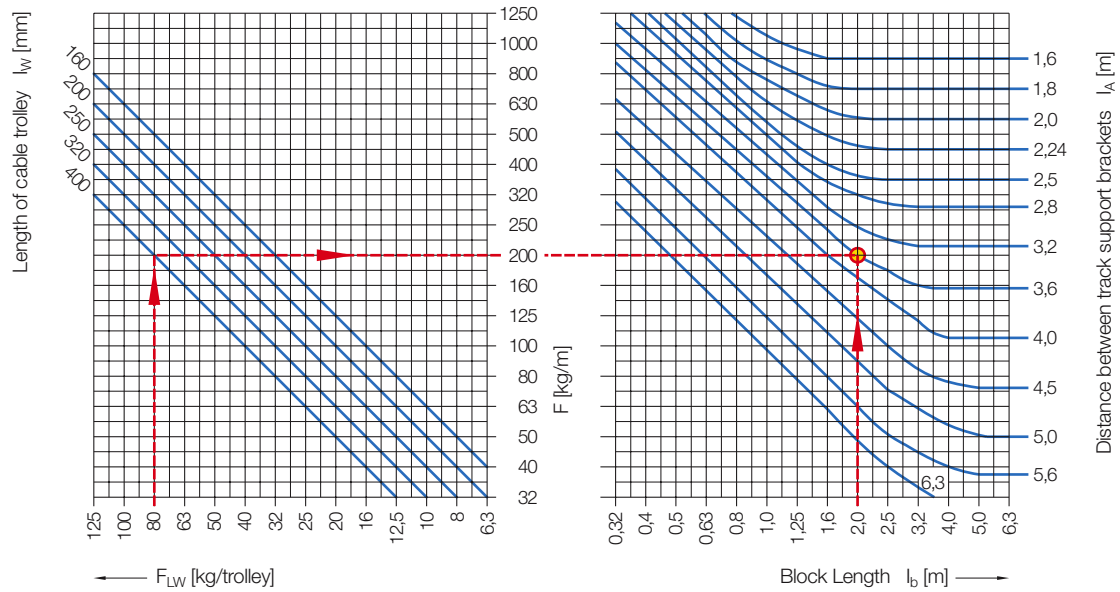
$l_A \sim 1,9$ m

Helpful Hints

Load diagram for C-Rail 025600

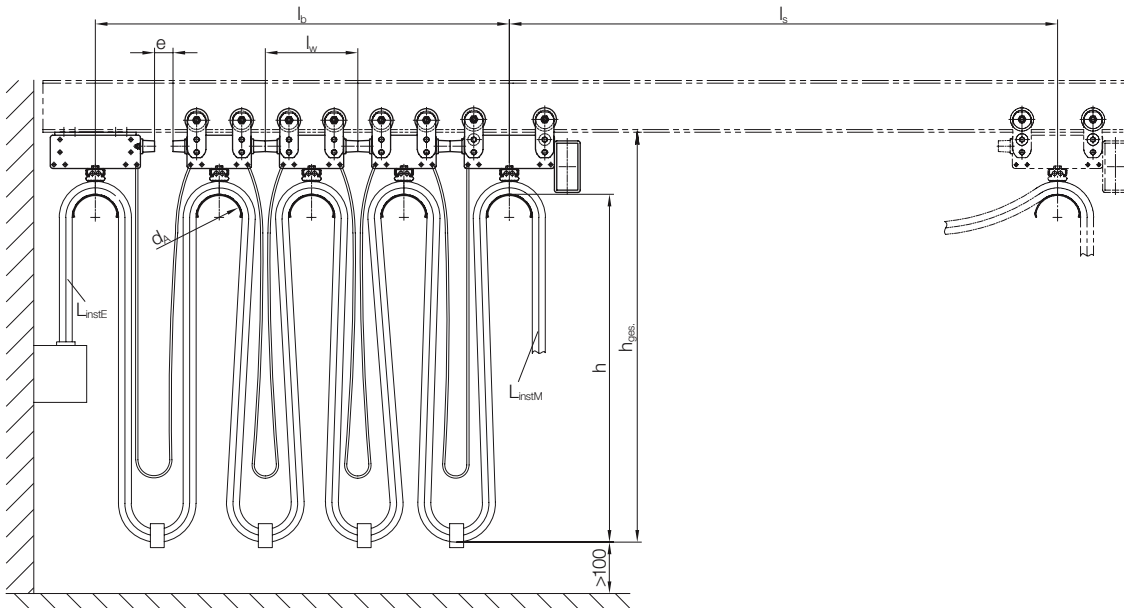


Load diagram for C-Rail 148005



Helpful Hints

Technical Data



Formulas to determine number of loops, cable length and loop depth

Number of Loops:

$$n = \frac{f \cdot (l_s + e)}{2 \cdot h + 1.25 \cdot d_A - f \cdot l_w}$$

Storage Distance:

$$l_b \approx n \cdot l_w + e \quad [\text{m}]$$

System Cable Length:

$$L_{\text{Syst}} = f \cdot (l_s + l_b) \quad [\text{m}]$$

Total Cable Length:

$$L_{\text{Best}} = L_{\text{Syst}} + L_{\text{instE}} + L_{\text{instM}} \quad [\text{m}]$$

Loop Length:

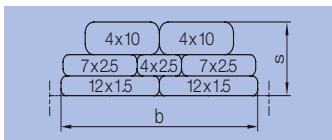
$$L_{\text{Schl}} = \frac{L_{\text{Syst}}}{n} \quad [\text{m}]$$

Loop Depth:

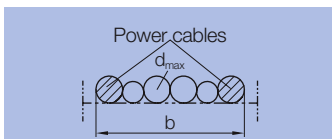
$$h = \frac{L_{\text{Schl}}}{2} - 0.63 \cdot d_A \quad [\text{m}]$$

- d_A [m] = Saddle diameter
- e [m] = free space in storage distance (recommended ≥ 0.1 m)
- f = cable factor
- h [m] = Loop depth (measured from top of support saddle)
- h_{ges} [m] = Loop depth (measured from lower beam flange)
- l_b [m] = storage distance
- l_s [m] = Active travel
- l_w [m] = Cable trolley length
- L_{Best} [m] = Total cable length
- L_{instE} [m] = Installation length end clamp side
- L_{instM} [m] = Installation length towing side
- L_{Schl} [m] = Cable length per loop
- L_{Syst} [m] = System cable length
- n = Number of loops

Trolley Selection Process



Example for Flat Cable Trolleys



Example for Round Cable Trolleys

1. Formula for calculating the approximate load per trolley F_{LW} :

$$F_{LW} \approx 2 \cdot h \cdot G_L \quad [\text{kg}]$$

G_L [kg/m] = Weight of the cable package

2. Selection of base trolley type from Program 0250, 0255 oder 0260.
3. Saddle selection based upon cable minimum bend diameter.
4. Saddle with selection (b_2) to accommodate cable package width.
5. Determine cable trolley length l_w .

For Flat Cable Trolleys:

$$l_w \geq d_A + 2 \cdot d_{\text{max}} + 10 \quad [\text{mm}]$$

For Round Cable Trolleys:

$$l_w \geq d_A + 2 \cdot s + 10 \quad [\text{mm}]$$

Helpful Hints

Cable Factors

Speed v [m/min]	Cable factor (f) height h [m]				
	< 0.8	0.8 - 1.2	1.3 - 2	2.1 - 3.2	3.3 - 5
< 32	1.10	1.10	1.10	1.10	1.10
32 - 40	1.15	1.10	1.10	1.10	1.10
41 - 50	1.20	1.15	1.10	1.10	1.10
51 - 63	1.25	1.20	1.15	1.10	1.10
64 - 80	-	1.25	1.20	1.15	1.10
81 - 100	-	-	1.25	1.20	1.15
101 - 120	-	-	-	1.25	1.20

Depending on the operating conditions and parameters, energy supply systems must be installed with additional cable length. This length is calculated by taking into account the cable factor (f) we have presented in the table to the left.

Special precautions must be made for flexible cable systems in the gray area. One such precaution might be installation of shock cords.

Permissible Loads per Trolley

Speed v [m/min]	Average running time per day [h]				
	4 - 8	9 - 16	>16	-	
< 25	4 - 8	9 - 16	>16	-	
25 - 50	2 - 4	5 - 8	9 - 16	>16	
51 - 80	< 2	2 - 4	5 - 8	9 - 16	>16
101 - 120	-	< 2	2 - 4	5 - 8	9 - 16

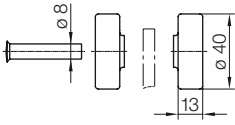
The lifetime of the main roller and the beam depend on the diameter of the roller, the load and the frequency of operation. The proper selection, based on mean traveling speed, running time per day, load, and roller diameter can be made by using the tables on this page.

Program	Steel Roller ø [mm]	Permissible load per trolley [kg]				
		80	63	50	40	32
0250	40	80	63	50	40	32
0255	50	125	100	80	63	50
0260	62	200	160	125	100	80

Program	PUR Roller ø [mm]	Permissible load per trolley [kg]				
		63	50	40	32	25
0250	40	63	50	40	32	25
0255	50	100	80	63	50	40
0260	63	160	125	100	80	63

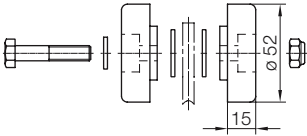
Spare Parts

Pairs of Rollers for Program 0250

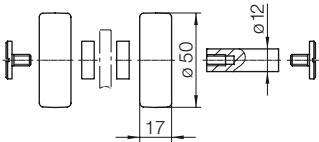


Description	Catalogue-No.
Standard Roller	025460-21
Roller with Seal Disk	025462-21
PUR Roller	025468-21

Pairs of Rollers for Program 0255

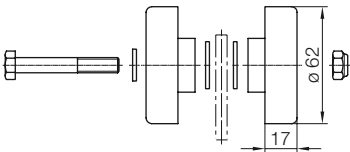


Description	Catalogue-No.
Standard Roller	025980-21
Roller with Seal Disk	025985-21

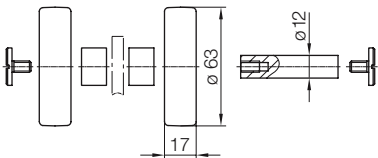


Description	Catalogue-No.
PUR Roller	025988-21

Pairs of Rollers for Program 0260



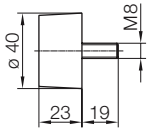
Description	Catalogue-No.
Standard Roller	026480-21
Roller with Seal Disk	025485-21



Description	Catalogue-No.
PUR Roller	026488-21

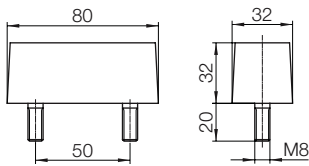
Spare Parts

Buffer for Program 0250



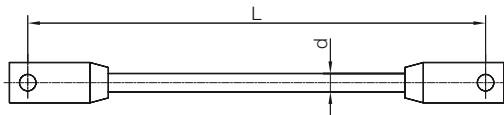
Catalogue-No. 02-P014-0024

Buffer for Program 0255 und 260



Catalogue-No. 017132-032x80/514

Shock Cord for Program 0250, 0255 und 0260



Catalogue-No.	d [mm]
020336-10	10
020336-14	14

Your Applications – our Solutions

Festoon systems by Wampfler are but one component of the wide range of the Wampfler energy, data and media supply systems. The right solution for your application always ensues from the wholly specific application at hand.

And many times, it is precisely the combination of several Wampfler systems that will render very convincing benefits. You can find consulting and engineering competence in our companies and subsidiaries worldwide - just like our solutions!



Festoon systems

It's hard to imagine Wampfler cable trolleys not being used in virtually every industrial application: They're reliable and robust in an enormous variety of dimensions and designs

Cable reels

Motorized reels and spring cable reels by Wampfler hold their own wherever energy, data and media have to cover the most diverse distances within a short amount of time - in all directions, fast and safe.

Slip ring bodies

Whenever things are really moving „in circles“, the proven slip ring bodies by Wampfler ensure the flawless transfer of energy and data. Here, everything revolves around flexibility and reliability!

Conductor rails

Whether they're enclosed conductor rails or expandable single-pole systems, the proven conductor rails by Wampfler reliably move people and material.

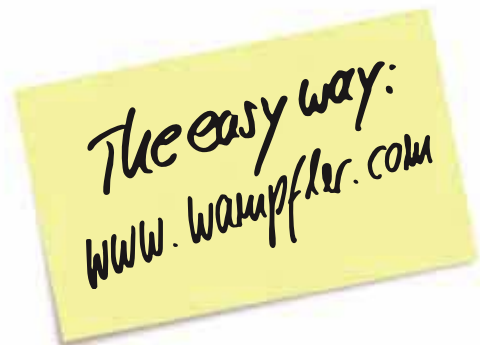
Energy guiding chains

The „Jack of all trades“ when it comes to transferring energy, data and media. With their wide range, these energy guiding chains hold their own in industrial applications.

Inductive Power Transfer IPT®

The no-contact system for transferring energy and data. For all tasks that depend on high speeds and absolute resistance to wear.

www = wampfler world wide



Wampfler AG

Rheinstrasse 27 + 33
79576 Weil am Rhein-Maerkt
Germany

Customer Support

Phone +49 (0) 7621/66 22 22

Phone +49 (0) 7621/6 62-0

Fax +49 (0) 7621/6 62-144

info@wampfler.com

www.wampfler.com

wampfler
solutions for a moving world